



RM200B BarnTools Interface



Table of Contents

| | |
|----------------------------------|---|
| Mounting | 3 |
| Wiring | 3 |
| BarnTools Gateway Setup | 5 |
| Status Lights | 6 |
| Test Button | 6 |
| Dip Switches | 6 |
| HerdStar BinTrac® Warranty | 7 |

BINTRAC® is a registered trademark of HerdStar, LLC.
 Copyright © 2023 HerdStar®, LLC. All rights reserved.
 Printed in the USA



1400 Madison Avenue Suite 504, Mankato, MN 56001
 PH: 507-344-8005 FAX: 507-344-8009
www.herdstar.com

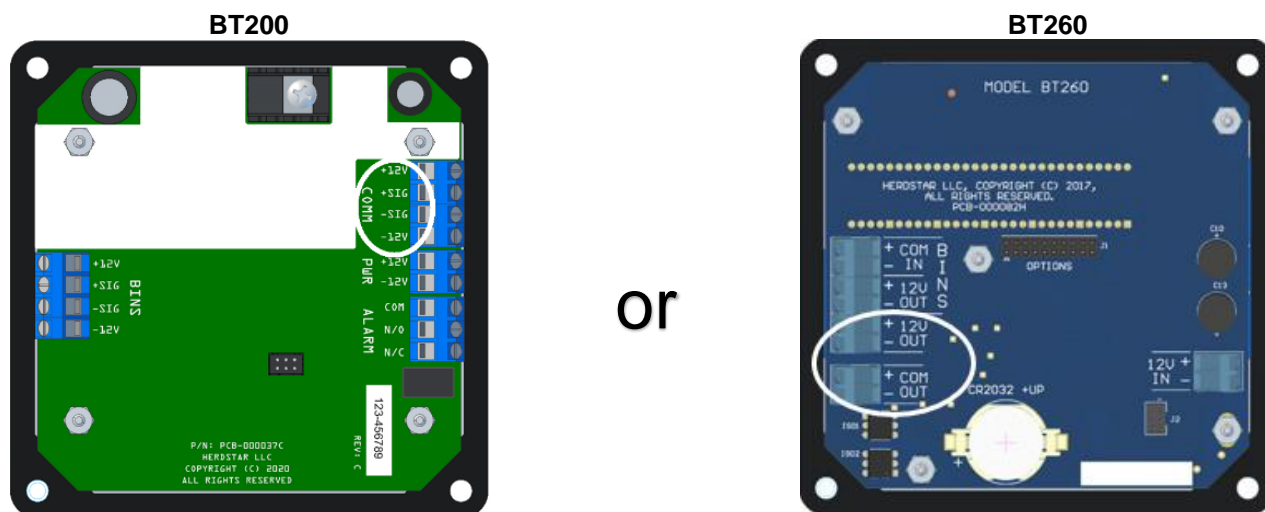
Mounting

Mount the RM200B outdoors using the mounting holes on the top and bottom of the unit, taking care to position it in an area with the least amount of interference.

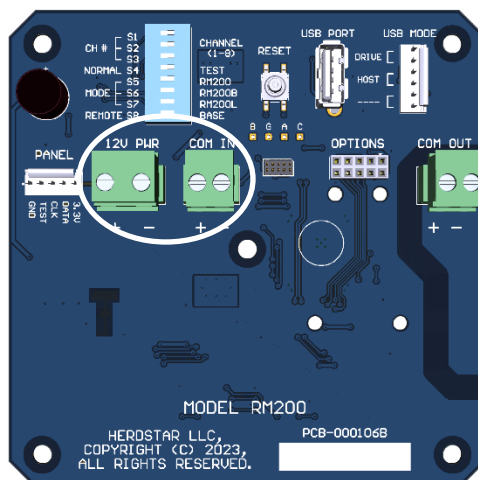
Wiring

Determine which BinTrac Indicator you have, either the BT200 (smaller, 5-digit display) or the BT260 (larger, 6-digit display) and wire the RM200B to the BinTrac Indicator using the information below. The relevant terminals on each unit are circled in white. The unit comes standard with a pre-wired 10 foot cable.

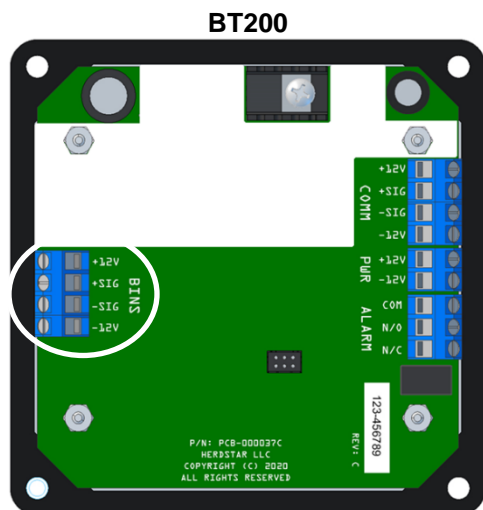
Standard/Master Wiring – This is used when the BinTrac Indicator is either a stand alone unit, or when it is the MASTER in a MASTER/REMOTE configuration.



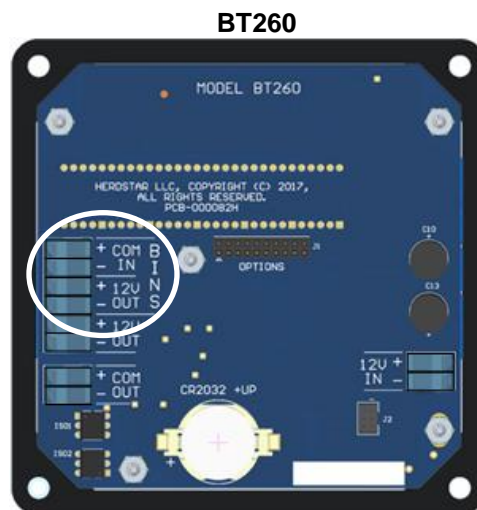
| BinTrac BT200 (COMM) | BinTrac BT260 (12V & COM OUT) | RM200B (12V PWR and COM IN) | Wire Color |
|----------------------|-------------------------------|-----------------------------|------------|
| +12V | +12V | 12V PWR + | RED |
| +SIG | COM OUT + | COM IN + | GREEN |
| -SIG | COM OUT - | COM IN - | WHITE |
| -12V | -12V | 12V PWR - | BLACK |



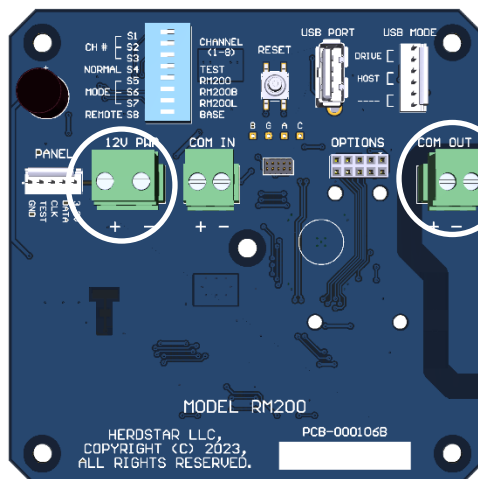
Remote Wiring - This is used when the BinTrac Indicator is the REMOTE in a MASTER/REMOTE configuration. The COM wires in the RM200B will need to be moved from the COM IN to the COM OUT



or



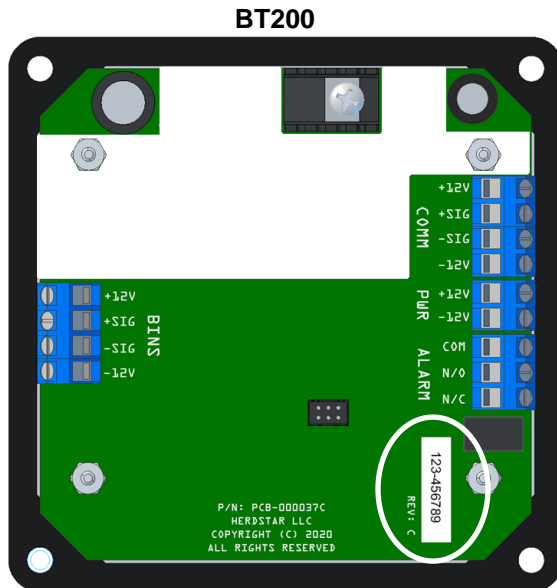
| BinTrac BT200 (BINS) | BinTrac BT260 (BINS) | RM200B (12V PWR and COM OUT) | Wire Color |
|----------------------|----------------------|------------------------------|------------|
| +12V | +12V | 12V PWR + | RED |
| +SIG | COM IN + | COM OUT + | GREEN |
| -SIG | COM IN - | COM OUT - | WHITE |
| -12V | -12V | 12V PWR - | BLACK |





BarnTools Gateway Setup

In order to pair to the BarnTools Gateway, you must first retrieve the **last 6 digits** of the serial number from inside the BinTrac Indicator. This can be found on the back side of the faceplate as shown below.



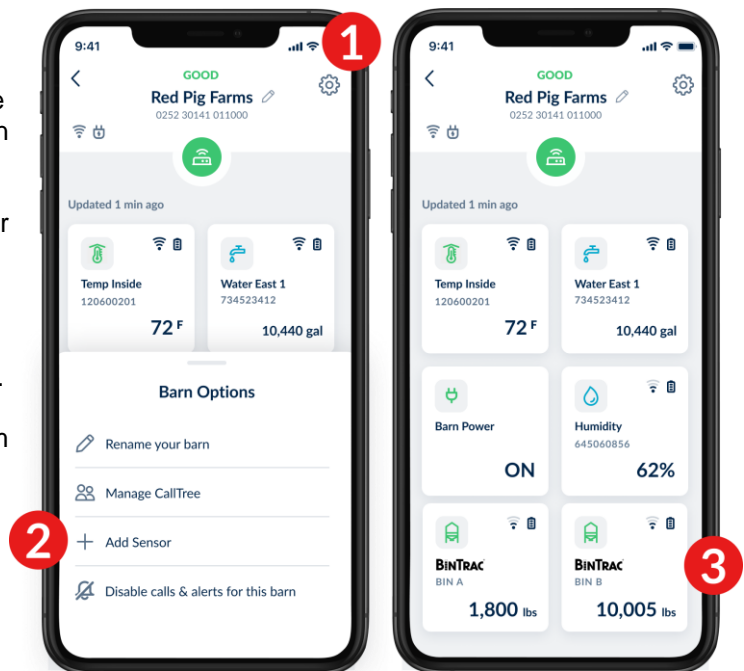
or



Open the gear icon in the top right of your screen and select "Add Sensor" then enter the **last 6 digits** of the serial number into the BarnTalk app. This process can also be done by contacting the BarnTools Support Team toll free at 855-580-0058, call/text at 515-272-5122, or by email at support@barntools.com with your BarnTalk Gateway serial number and the last 6 digits of your BinTrac indicator.

Note: The barcode will not be scannable. This number will need to be manually entered into the app.

Once paired, the BinTrac bins will take anywhere from 15-20 minutes to appear with a reading in the app. The BinTrac indicator is designed to communicate every 15 minutes with the BarnTalk Gateway. Your feed bins through BinTrac will appear in the BarnTalk app as indicated below.



Status Lights

The status lights on the RM200B indicate the following:

- Receive – Currently unused
- Transmit – Lights when the unit is transmitting data
- Status:

| LED Condition | Description | Resolution |
|---------------|------------------|-----------------------------------|
| No Light | No power | Check power, verify proper wiring |
| Solid On | No communication | Verify proper wiring |
| Slow Blink | Communicating | Communicating properly |

Test Button

Press TEST button to perform data transmission to BarnTools Gateway

Dip Switches

Ensure that dip switch number 6 is in the ON position. The other dip switches are currently unused.

HerdStar BinTrac® Warranty

HerdStar, LLC (“**HerdStar**”) warrants to original purchaser (“**Buyer**”) that goods manufactured solely by HerdStar, LLC (“**Products**”) will be free from defects in material or workmanship under normal and intended use and service for a period of one year from delivery date of the Products. Used and/or refurbished parts sold shall carry a 90-day warranty on material and workmanship. All warranty claims must be submitted within ten (10) days of discovery of defects within the warranty period, or shall be deemed waived. Furthermore, HerdStar, LLC warrants the load cell (“Load cell” is defined as the s-shaped component and any cabling and connectors) against lightning damage for 12 months or the term of any extended warranty.

In the event of a defect in any Products constituting a breach of the warranty provided herein, HerdStar, LLC will at its option either (i) repair or replace such Product free of charge, or (ii) in lieu of repair or replacement, refund to Buyer the original purchase price less the reasonable value of Buyer’s use of the Products. HerdStar, LLC shall furnish to Buyer instructions for the disposition of the defective goods. HerdStar, LLC shall have the option of requiring the return of the defective goods, transportation prepaid, and proof that the goods were not used, installed or altered or subject to misuse or abuse to establish the claim. No goods shall be returned to HerdStar, LLC without its prior consent. The acceptance of any goods returned to HerdStar, LLC shall not be deemed an admission that the goods are defective or in breach of any warranty, and if HerdStar, LLC determines that the goods are not defective they may be returned to Buyer at Buyer’s expense. This warranty sets forth Buyer’s sole and exclusive remedies for any defect in the goods. The rights and obligation under this warranty may not be assigned or delegated to a third party by Buyer without the prior written permission of HerdStar, LLC. Neither Buyer nor any other person may modify or expand the warranty provided herein, waive any of the limitations, or make any different or additional warranties with respect to the Products. Any statements to the contrary are hereby rendered null and void unless expressly agreed to in writing by an authorized officer of HerdStar, LLC.

EXCEPT AS STATED IN ABOVE, HERDSTAR, LLC DOES NOT MAKE ANY WARRANTY AS TO THE GOODS OR SERVICES AND, IN PARTICULAR, DOES NOT MAKE ANY WARRANTY OF MERCHANTABILITY OR FITNESS FOR ANY PARTICULAR PURPOSE, AND BUYER IS SOLELY RESPONSIBLE FOR DETERMINING THE PROPER APPLICATION AND USE OF THE GOODS.

HerdStar, LLC makes no representation or warranty that individual animals, or any given population of animals, will utilize any of HerdStar, LLC’s goods in the manner for which the goods were intended or designated. Any component parts that are not manufactured by HerdStar, LLC, such as electrical motors and controls, are excluded from any warrant by HerdStar, LLC, although such parts may be covered by separate warranties of the respective manufacturers. This warranty set forth above does not apply if all components of a system are not supplied by HerdStar, LLC or if the goods are not purchased from and installed by an authorized distributor or company warehouse, or installed and operated in accordance with HerdStar LLC’s specifications and instructions.

HERDSTAR, LLC SHALL NOT HAVE ANY TORT LIABILITY TO BUYER OR ANY OTHER PERSON WITH RESPECT TO ANY OF THE GOODS OR SERVICES AND SHALL NOT BE LIABLE FOR CONSEQUENTIAL, INCIDENTAL, SPECIAL, EXEMPLARY, INDIRECT OR PUNITIVE DAMAGES ARISING FROM ANY PRODUCT DEFECT, DELAY, NONDELIVERY, RECALL OR OTHER BREACH. BUYER SHALL NOT HAVE ANY RIGHT OF REJECTION OR OF REVOCATION OF ACCEPTANCE OF THE GOODS.