



## ***HouseLink HL-10S***

### ***Installation and Operation Manual***



Table of Contents

Installation Overview ..... 3

    Components ..... 3

Installation ..... 4

Setup & Configuration ..... 5

    Serial Interface Configuration Switch Block (4 position) ..... 5

    Communication Interface Switch Block (10 position) ..... 6

    Modbus RTU ..... 6

    Modbus Packet Data Format ..... 7

    ASCII (7 bit) ..... 9

    ASCII Data Record Formats ..... 10

    Serial Data Command Set ..... 10

Communication Hub ..... 11

Troubleshooting ..... 12

    LED Indicator ..... 12

    Reset Button ..... 12

    Serial Test Mode ..... 12


    BinTrac Error Messages ..... 13

Operational Specifications ..... 14

Appendix A – Maximus Details ..... 15

Legal ..... 16

HerdStar BinTrac® Warranty ..... 17

 is a registered trademark of HerdStar, LLC.  
Copyright © 2025 HerdStar, LLC. All rights reserved.  
Printed in the USA

  
1531 Madison Avenue Suite 400, Mankato, MN 56001  
PH: 507-344-8005 FAX: 507-344-8009  
[www.herdstar.com](http://www.herdstar.com)

## ***Installation Overview***

This guide covers the mounting and wiring of the HouseLink HL-10S interface. HouseLink interfaces should be placed indoors.



This symbol means the text has extra importance since it is describing the importance of a feature or explaining a step to which you should pay close attention to avoid problems, or to which safety is a concern.

## ***Components***

A BinTrac system consists of a number of basic components:

### **BinTrac Indicator (Version 3.15 or higher)**

This is the main unit of the BinTrac system. The BinTrac Indicator communicates with the Smart Summing Boxes to register the weight of feed in the bins and peripheral devices including HouseLink HL-10S. The feed level is computed and displayed on the LED bar graph. One BinTrac Indicator can display up to four feed bins.

### **BinTrac Indicator (Version 3.08 or earlier)**

BinTrac Indicators with previous software versions (3.08 or earlier) will only work in Pass Through mode (see page 11).

### **Load Cell Bracket**

Four or more load cell brackets allow the BinTrac Indicator to accurately measure the feed level in your bins. The summing box averages the signals from all brackets to minimize errors that could result from voids (holes) in the feed.

### **Smart Summing Box**

One Smart Summing Box per bin communicates the current reading on the leg brackets to the BinTrac Indicator.

### **BinTrac Power Supply**

This provides the power for the BinTrac system. The power supply converts the line voltage to low voltage.

### **HouseLink Model HL-10S**

The HouseLink 10S (HL-10S) provides an RS232 or RS485 serial interface to the BinTrac system.

### **HouseLink Power Supply**

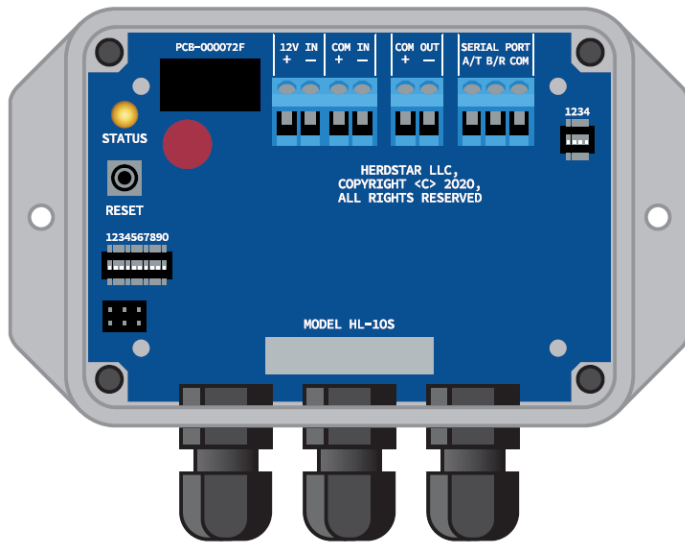
This provides the power for the HouseLink HL-10S.

## Installation

### Mounting HouseLink HL-10S

**Step 1:** If the HouseLink HL-10S is to be used in RS-232 mode, it should be mounted no more than 25 feet from the house control. If the HouseLink HL-10S is to be used in RS-485 mode, it can be mounted up to 1000 feet from the house control.

### Wiring the HouseLink HL-10S Interface



HL-10S	BinTrac Indicator	
	BT200	BT260
<b>+COM (IN)</b>	<b>+SIG(comm)</b>	<b>+COM OUT</b>
<b>-COM (IN)</b>	<b>-SIG(comm)</b>	<b>-COM OUT</b>
<b>HL-10S</b>	<b>POW-00005</b>	
<b>+12V (IN)</b>	<b>+12V (Dashed Black)</b>	
<b>-12V (IN)</b>	<b>-12V (Solid Black)</b>	
<b>HL-10S</b>	<b>House Control/PLC</b>	
<b>A/T</b>	<b>Data Receive</b>	
<b>B/R</b>	<b>Data Transmit</b>	
<b>COMMON</b>	<b>Data Common</b>	

Table 1



Figure 1



Figure 2

**Step 2:** Connect the HouseLink HL-10S interface to the BinTrac Indicator (Figure 1) and Power Supply (Figure 2) using the wiring guidelines in Table 1 above.

**NOTE:** If connecting more than one BinTrac Indicator to the HL-10S, connect each Indicator with a 2-conductor cable in a chain using the ports indicated in Figure 1 above. Figure 3 below demonstrates this with three BT200s. When using multiple BinTrac Indicators in this way, each one must be set to a unique Station ID. Please reference the BT200/BT260 Operator's Manual for more information on configuring the Station ID.

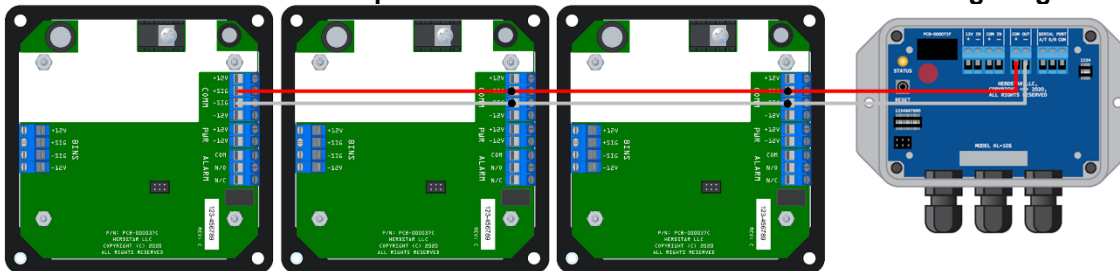


Figure 3

**Step 3:** Connect the Transmit (RS-232) or A (RS-485), Receive (RS-232) or B (RS-485) and Common to the House Control or PLC.

**Step 4:** Once the BinTrac System and the HouseLink HL-10S are installed and powered up, press the RESET button on the board. This will force the device to power cycle allowing it to discover the connected devices.

## Setup & Configuration

There are three modes the HouseLink HL-10S Interface can communicate; ASCII, Modbus RTU and as a Communication Hub. ASCII and Modbus RTU are unique software protocols designed to allow the PLC or house control to communicate with multiple remote devices. The Communication Hub uses a proprietary communication protocol to connect the scale system to BinLink for local monitoring and management and BinTrac.com for remote monitoring and management. Each of these modes use specific setup requirements. Specific settings will need to be provided; these must be obtained from the PLC or house control administrator.

There are two sets of switch blocks that need to be set in order for your HouseLink HL-10S to operate. The interface configuration switch block (4 positions) allows the user to switch between RS-232 and RS-485 and access advanced settings (see below). The communication interface switch block (10 positions) allows the user to set the mode and various settings for each mode based on the user requirements.

### Serial Interface Configuration Switch Block (4 position)

	Dip Switch 1	Dip Switch 2	Dip Switch 3	Dip Switch 4
RS-232	OFF	ON	ON	OFF
RS-485	OFF	OFF	OFF	OFF

Table 2

The switches in Table 2 should be set prior to moving forward with the rest of the configuration and will not need to be changed thereafter. Below are the advanced settings:

#### Switch 1: Terminating Resister

The terminating resister helps control signal reflections and is especially important for high speed RS-485 communications. This switch can be turned to the **ON** position for RS-485 applications that use a higher baud rate, have a long cable run, or there is a considerable amount of noise on the cable. For RS-232 applications, this switch should be set to the **OFF** position.

#### Switch 2: Charge Pump

When using RS-232 in full duplex, this switch should be set to **ON**.

#### Switch 3: RS-485/RS-232

This switch is used to set RS-232 or RS-485. When set to RS-232, cabling should be no longer than 25 feet.

#### Switch 4: Slew Rate Limiter (RS-485)/Z input (RS-232)

For low speed RS-485 below 150K baud rate, this switch should be set to **ON**. This will control reflection on an improperly terminated cable. For high speed RS-485 (baud rates greater than 150K), this switch should be set to **OFF**. For RS-232, this switch should be set to **OFF**.

## Communication Interface Switch Block (10 position)

The following pages will outline how to set up the HouseLink HL-10S for each communications interface mode. Prior to making these configuration changes, you should verify you have the proper settings from the administrator.

### Modbus RTU

	Dip Switch 1	Dip Switch 2	Dip Switch 3	Dip Switch 4	Dip Switch 5	Dip Switch 6	Dip Switch 7	Dip Switch 8	Dip Switch 9	Dip Switch 10
Modbus Output	OFF	ON	-	-	-	-	OFF	OFF	OFF	-
Baud Rate (1200)		-	OFF	OFF	-	-	-	-	-	-
Baud Rate (9600)	-	-	ON	OFF	-	-	-	-	-	-
Baud Rate (19200)	-	-	OFF	ON	-	-	-	-	-	-
Baud Rate (38400)	-	-	ON	ON	-	-	-	-	-	-
No Parity	-	-	-	-	OFF	OFF	-	-	-	-
Even Parity	-	-	-	-	ON	OFF	-	-	-	-
Odd Parity	-	-	-	-	OFF	ON	-	-	-	-
No Parity	-	-	-	-	ON	ON	-	-	-	-
RS-232	-	-	-	-	-	-	-	-	-	ON
RS-485	-	-	-	-	-	-	-	-	-	OFF

Table 3

#### Modbus Output

Switch 1 and 2 allow the user to set the HouseLink HL-10S to Modbus or ASCII. For Modbus, switch 1 will be set to **OFF** and switch 2 will be set to **ON**.

#### Baud Rate

There are four different baud rates that are used on the HouseLink HL-10S; 1200, 9600, 19200, and 38400. Switch 3 and 4 will need to be set according to the chosen baud rate. Refer to Table 3 above to determine the correct switch settings.

#### Parity

There are three different parity settings that are used on the HouseLink HL-10S; No Parity, Even Parity, and Odd Parity. Refer to Table 3 above to determine the correct switch settings.

#### Serial Interface

Switch 10 is used to set the HouseLink HL-10S to either RS-232 (**ON**) or RS-485 (**OFF**).

NOTE: Switches 7, 8, and 9 are not used in Modbus setup and should be set to their default **OFF** position.

## Modbus Packet Data Format

Below are sample Modbus request and response packets:

*SAMPLE WEIGHT REQUEST*

HEX	DESCRIPTION	DECIMAL	
07	DEVICE ID	7	BINTRAC STATION ID
04	INPUT REG	4	
03e7	ADDRESS	1000	START ADDRESS
0008	LENGTH	8	DATA LENGTH
28	CRC HIGH		
d9	CRC LOW		

TABLE 4

*SAMPLE WEIGHT RESPONSE*

HEX	DESCRIPTION	DECIMAL	
07	DEVICE ID	7	BINTRAC STATION ID (1-127)
04	INPUT REG	4	
10	SIZE	16	
000815a	BIN A	33114	DATA
ffff8001	BIN B	-32767	DATA
ffff8001	BIN C	-32767	DATA
ffff8001	BIN D	-32767	DATA
28	CRC HIGH		
2a	CRC LOW		

TABLE 5

*SAMPLE FILL REQUEST*

HEX	DESCRIPTION	DECIMAL	
05	DEVICE ID	5	BINTRAC STATION ID
04	INPUT REG	4	
04AF	ADDRESS	1200	START ADDRESS
0012	LENGTH	18	DATA LENGTH
40	CRC HIGH		
92	CRC LOW		

TABLE 6

*SAMPLE FILL RESPONSE*

HEX	DESCRIPTION	DECIMAL	
05	DEVICE ID	5	BINTRAC STATION ID (1-127)
04	INPUT REG	4	
24	SIZE	36	
0F	YEAR	15	
6	MONTH	6	
1D	DAY	29	
00	HOUR	0	
0D	MINUTE	13	
00001C29	BIN A	7209	
0F	YEAR	15	
6	MONTH	6	
1D	DAY	29	
00	HOUR	0	
0D	MINUTE	13	
00000F37	BIN B	3895	
0F	YEAR	15	
6	MONTH	6	
1D	DAY	29	
00	HOUR	0	
0D	MINUTE	13	
00001368	BIN C	1968	
0F	YEAR	15	
6	MONTH	6	
1D	DAY	29	
00	HOUR	0	
0D	MINUTE	13	
00001C29	BIN D	7209	
58	CRC HIGH		
77	CRC LOW		

TABLE 7

Sample Modbus request and response packets (continued):

SAMPLE USAGE REQUEST

HEX	DESCRIPTION	DECIMAL
05	DEVICE ID	5
04	INPUT REG	4
0577	ADDRESS	1400
0012	LENGTH	18
c1	CRC HIGH	
55	CRC LOW	

BINTRAC STATION ID

START ADDRESS

DATA LENGTH

TABLE 8

SAMPLE USAGE RESPONSE

HEX	DESCRIPTION	DECIMAL
05	DEVICE ID	5
04	INPUT REG	4
24	SIZE	36
0F	YEAR	15
07	MONTH	7
05	DAY	5
00	HOUR	0
00	MINUTE	0
000006A7	BIN A	1703
0F	YEAR	15
07	MONTH	7
05	DAY	5
00	HOUR	0
00	MINUTE	0
000006ED	BIN B	1773
0F	YEAR	15
07	MONTH	7
05	DAY	5
00	HOUR	0
00	MINUTE	0
000004CA	BIN C	1226
0F	YEAR	15
07	MONTH	7
05	DAY	5
00	HOUR	0
00	MINUTE	0
000006ED	BIN D	1773
5B	CRC HIGH	
24	CRC LOW	

BINTRAC STATION ID (1-127)

TABLE 9

## Weight Data Conditions:

BinTrac Display	Weight	Error Description
no.bin	-32000	Smart Summing Box is not communicating with the BinTrac Indicator
N/A	-32767	Selected Bin is disabled and not displayed.
Error	99999 or -9999	Calculated weight exceeds display limit of >99999 or < -9999
o.LoAd	>150% of Capacity	Weight exceeds 150% of programmed capacity.
no.con	-32600	Remote Display lost communications connection with Host BinTrac Indicator

Table 10



## ASCII (7 bit)

	Dip Switch 1	Dip Switch 2	Dip Switch 3	Dip Switch 4	Dip Switch 5	Dip Switch 6	Dip Switch 7	Dip Switch 8	Dip Switch 9	Dip Switch 10
ASCII Output	<b>ON</b>	<b>OFF</b>	-	-	-	-	-	-	-	-
Baud Rate (1200)		-	<b>OFF</b>	<b>OFF</b>	-	-	-	-	-	-
Baud Rate (9600)	-	-	<b>ON</b>	<b>OFF</b>	-	-	-	-	-	-
Baud Rate (19200)	-	-	<b>OFF</b>	<b>ON</b>	-	-	-	-	-	-
Baud Rate (38400)	-	-	<b>ON</b>	<b>ON</b>	-	-	-	-	-	-
No Parity	-	-	-	-	<b>OFF</b>	<b>OFF</b>	-	-	-	-
Even Parity	-	-	-	-	<b>ON</b>	<b>OFF</b>	-	-	-	-
Odd Parity	-	-	-	-	<b>OFF</b>	<b>ON</b>	-	-	-	-
No Parity	-	-	-	-	<b>ON</b>	<b>ON</b>	-	-	-	-
Broadcast Off	-	-	-	-	-	-	<b>OFF</b>	-	-	-
Broadcast On	-	-	-	-	-	-	<b>ON</b>	-	-	-
Single Bin (A)	-	-	-	-	-	-	-	<b>OFF</b>	-	-
Multi Bin (A,B,C,D)	-	-	-	-	-	-	-	<b>ON</b>	-	-
5 Digit Output	-	-	-	-	-	-	-	-	<b>OFF</b>	-
6 Digit Output	-	-	-	-	-	-	-	-	<b>ON</b>	-
RS-232	-	-	-	-	-	-	-	-	-	<b>ON</b>
RS-485	-	-	-	-	-	-	-	-	-	<b>OFF</b>

Table 11

### ASCII Output

Switch 1 and 2 allow the user to set the HouseLink HL-10S to Modbus or ASCII. For ASCII, switch 1 will be set to **ON** and switch 2 will be set to **OFF**.

### Baud Rate

There are four different baud rates that are used on the HouseLink HL-10S; 1200, 9600, 19200, and 38400. Switch 3 and 4 will need to be set according to the chosen baud rate. Refer to Table 11 above to determine the correct switch settings.

### Parity

There are three different parity settings that are used on the HouseLink HL-10S; No Parity, Even Parity, and Odd Parity. Refer to Table 11 above to determine the correct switch settings.

### Broadcast

Switch 7 is used to set broadcast **ON** or **OFF**. Refer to Table 11 above to determine the correct switch settings.

### Single/Multi Bin

Switch 8 sets the output data format as single or multiple bin configurations. Refer to Table 11 above to determine the correct switch settings.

### 5 or 6 Digit Output

Switch 9 selects a 5 or 6 digit output. Refer to Table 11 above to determine the correct switch settings.

### Serial Interface

Switch 10 is used to set the HouseLink HL-10S to either RS-232 (**ON**) or RS-485 (**OFF**).

## ASCII Data Record Formats

Data Format for Single and Multiple Bin Configurations

Data Format Options	Data Format ( for “P” command )
Single Bin	+/-wwwwwcrLf **
Multiple Bins	+/-wwwww,+/-wwwww,+/-wwwww,+/-wwwwwcrLf **

Table 12

## Serial Data Command Set

Poll Command	Description and Data Record Format (fixed length)
P	Current weight of first enabled bin: +/-wwwwwcrLf
PP	Current weight of all four bins: +/-wwwww,+/-wwwww,+/-wwwww,+/-wwwwwcrLf
SnnP	Current weight of first enabled bin with matching BinTrac Station ID: +/-wwwwwcrLf *Also works with F, FF and U, UU commands
SnnPP crLf	Current weight of all four bins with matching BinTrac Station ID: +/-wwwww,+/-wwwww,+/-wwwww,+/-wwwwwcrLf *Also works with F, FF and U, UU commands
Fcr	Single Bin Fill: yy,mm,dd,hh,mm,+/-wwwwwcrLf
Ucr	Single Bin Usage: yy,mm,dd,hh,mm,+/-wwwwwcrLf
FFcr	Multiple Bin Fill: yy,mm,dd,hh,mm,+/-wwwwwcrLf yy,mm,dd,hh,mm,+/-wwwwwcrLf yy,mm,dd,hh,mm,+/-wwwwwcrLf yy,mm,dd,hh,mm,+/-wwwwwcrLf
UUcr	Multiple Bin Usage: yy,mm,dd,hh,mm,+/-wwwwwcrLf yy,mm,dd,hh,mm,+/-wwwwwcrLf yy,mm,dd,hh,mm,+/-wwwwwcrLf yy,mm,dd,hh,mm,+/-wwwwwcrLf

Table 13

**Note:** All commands must be terminated by CR. Latency between characters within a multiple character command (including CR), cannot exceed 250msec.

**\*\* Fixed length weight values can be configured for 5 or 6 digits as set by dip switch settings.**

w – bin weight

n – Station ID number

yy,mm,dd,hh,mm – Year, Month, Day, Hour, Minutes

CR – Carriage Return (Hx0D).

LF – Line Feed (Hx0A).

## Weight Data Conditions:

BinTrac Display	Weight	Error Description
no.bin	-32000	Smart Summing Box is not communicating with the BinTrac Indicator
N/A	-32767	Selected Bin is disabled and not displayed.
Error	99999 or -9999	Calculated weight exceeds display limit of >99999 or < -9999
o.LoAd	>150% of Capacity	Weight exceeds 150% of programmed capacity.
no.con	-32600	Remote Display lost communications connection with Host BinTrac Indicator

Table 14

## Communication Hub

	Dip Switch 1	Dip Switch 2	Dip Switch 3	Dip Switch 4	Dip Switch 5	Dip Switch 6	Dip Switch 7	Dip Switch 8	Dip Switch 9	Dip Switch 10
Comm Hub	OFF	OFF	OFF	OFF	OFF	OFF	OFF	OFF	OFF	-
No Parity	-	-	-	-	OFF	OFF	-	-	-	-
Even Parity	-	-	-	-	ON	OFF	-	-	-	-
Odd Parity	-	-	-	-	OFF	ON	-	-	-	-
No Parity	-	-	-	-	ON	ON	-	-	-	-
RS-232	-	-	-	-	-	-	-	-	-	ON
RS-485	-	-	-	-	-	-	-	-	-	OFF

Table 15

### Communication Hub

The HouseLink HL-10S can operate as a Communication Hub. To do so, switches one through nine will need to be set to **OFF**.

### Parity

There are three different parity settings that are used on the HouseLink HL-10S; No Parity, Even Parity and Odd Parity. Refer to Table 15 above to determine the correct switch settings.

### Serial Interface

Switch 10 is used to set the HouseLink HL-10S to either RS-232 (**ON**) or RS-485 (**OFF**).

When used as a Communication Hub, the HouseLink HL-10S can be connected to an external AT modem, cellular modem or Internet connection. This equipment is sold separately.

## Pass Through Mode

\*This mode allows communications to pass through the HL-10S unaltered. This mode is to be used with systems using a BinTrac Indicator with software version 3.14 or earlier.

	Dip Sw itch 1	Dip Sw itch 2	Dip Sw itch 3	Dip Sw itch 4	Dip Sw itch 5	Dip Sw itch 6	Dip Sw itch 7	Dip Sw itch 8	Dip Sw itch 9	Dip Sw itch 10
PASS THRU	ON	ON	OFF	OFF	OFF	OFF	OFF	OFF	OFF	-
232	-	-	-	-	-	-	-	-	-	ON
485	-	-	-	-	-	-	-	-	-	OFF

Table 16

## Troubleshooting

### LED Indicator

The HouseLink HL-10S can be used in various modes and with various setup parameters. The LED light inside the unit will display 4 different ways; **OFF**, **ON**, **SLOW BLINK**, and **FAST BLINK**. Table 17 has a brief explanation of what those conditions mean and a resolution to each.

LED Condition	Description	Resolution
No Light	No Power	Check Power
Solid ON	No Communication	Verify wiring and baud rate
Slow Blink	Communicating	Verify correct data is being transferred
Fast Blink	Discovery Mode	Discovering devices, wait until finished.

Table 17

### Reset Button

The reset button will respond differently depending upon the mode the device is currently in. Below is an explanation of the reset button based on mode

**Modbus:** Device will reset, and all parameters will remain the same.

**ASCII:** Device will reset, and all parameters will remain the same. If the device is in broadcast mode, it will enter discovery mode\*.

**Communication Hub:** Device will reset and will enter discovery mode\*.

*\*Discovery mode is when the HouseLink HL-10S searches for BinTrac® devices.*

### Serial Test Mode

The serial test mode will allow you to verify settings and wiring from the HL-10S in ASCII mode\* to your PC/terminal software.

Hold the test button for about 30 seconds and the LED will flash. This indicates that a test packet was sent from the serial device through the serial port.

Reference your terminal software:

- If there is no message, it is likely that the wiring is wrong.
- If the message displayed is jumbled, the likely scenario is the wrong baud/parity.
- If the message is clear, the settings and transmit lines from the serial device are good.

Validate the receive line by hitting any key in the terminal to send an acknowledge command. If there is a follow-up message in the terminal window, the receive line is also good. If there is no message, the receive line may be broken or not wired properly.

*\*The test mode will also work in Communication Hub mode but will only validate the wiring of the serial port. In Communication Hub mode, set the terminal software to no parity and 57600 baud (as these are the default serial settings for Communication Hub mode). Modbus mode works in the same manner as the ASCII mode described above, albeit with a different connection to the PC/terminal.*

## BinTrac Error Messages

### no.bin

This error message indicates that the BinTrac Indicator is not communicating with the Smart Summing Box of the indicated bin.

- *Disable bins that do not have an associated Smart Summing Box and bin.*
- *Verify wiring between Smart Summing Box and BinTrac Indicator is correct and has not been damaged.*
- *Verify Smart Summing Box has been programmed as the correct bin.*
  - *Verify Smart Summing Box dip switch settings are set for their selected bin (A, B, C, or D).*
  - *Verify that two Smart Summing Boxes are not programmed as the same bin as this will cause a **no.bin** error for both.*
- *Inspect Smart Summing Box for flashing light.*
  - *A steady flashing light indicates the Smart Summing Box has power and is operating correctly.*
  - *An irregular flashing light indicates the Smart Summing Box has power but is unable to communicate with the BinTrac Indicator.*
    - *Confirm all wires are tight and secure.*
    - *Confirm dipswitches are set correctly.*
    - *Communications port on Smart Summing Box or BinTrac Indicator may have been damaged.*
      - *If BinTrac Indicator is displaying **no.bin** for other connected bins, replace Indicator.*
      - *Replace Smart Summing Box*
  - *No Light indicates the Smart Summing Box does not have adequate power or has been damaged.*
    - *Confirm all wires are tight and secure.*
    - *Verify 12VDC is available to the Smart Summing Box.*
    - *Locate a shorted load cell that could be shorting power within Smart Summing Box.*
- *If more than a single bin is displaying **no.bin**, isolate the problem Smart Summing Box by removing all connects except to a single Smart Summing Box.*

### Error

This error message indicates the weight reading exceeds the five digit display. This can be caused by invalid programmed settings, a load cell not correctly plugged into a connector in the Smart Summing Box, a defective load cell causing a large weight reading, or a defective Smart Summing Box.

- *Confirm all programmed settings are correct*
  - *Verify Zero is valid and in-range. A large incorrect zero can cause this.*
  - *Verify Capacity (**L.C.CAP**) has been correctly programmed.*
- *Open summing box and inspect load cell connections.*
  - *Verify connector is properly aligned with its associated header.*
  - *Verify wires are properly seated in each connector.*
- *Confirm Smart Summing Box is clean and dry. Long-term moisture in a Smart Summing Box can cause inaccurate readings.*
- *Check Load Cells for damage/failure*

### no.con

This error message indicates that this device has been programmed as a Remote Display device and is unable to communicate with the master BinTrac Indicator.

- *Verify that this indicator is intended to be a Remote Display as configured in Setup Configuration. This error message more often appears when a BinTrac Indicator was accidentally programmed as a Remote Display unit.*
- *Verify wiring is correct between BinTrac Indicator and BinTrac Remote Display.*

## Operational Specifications

<b>Operating Temperature Range:</b>	-40°C to +60°C (-40°F to +140°F)
<b>Humidity:</b>	5% to 95% (non-condensing)
<b>Environmental Air:</b>	No corrosive gasses permitted
<b>Shock and Vibration:</b>	N/A
<b>Enclosure Type:</b>	Unsealed
<b>Agency Approvals:</b>	N/A
<b>Wiring Type:</b>	Screw terminal blocks
<b>Power Requirements:</b>	10.5 VDC – 13.5 VDC (Current depends on port loading)
<b>Configurable SERIAL Com Interface:</b>	Isolated RS232/RS485
<b>COM IN/OUT Serial Com Interfaces:</b>	HerdStar optically isolated (proprietary)



## Appendix A – Maximus Details

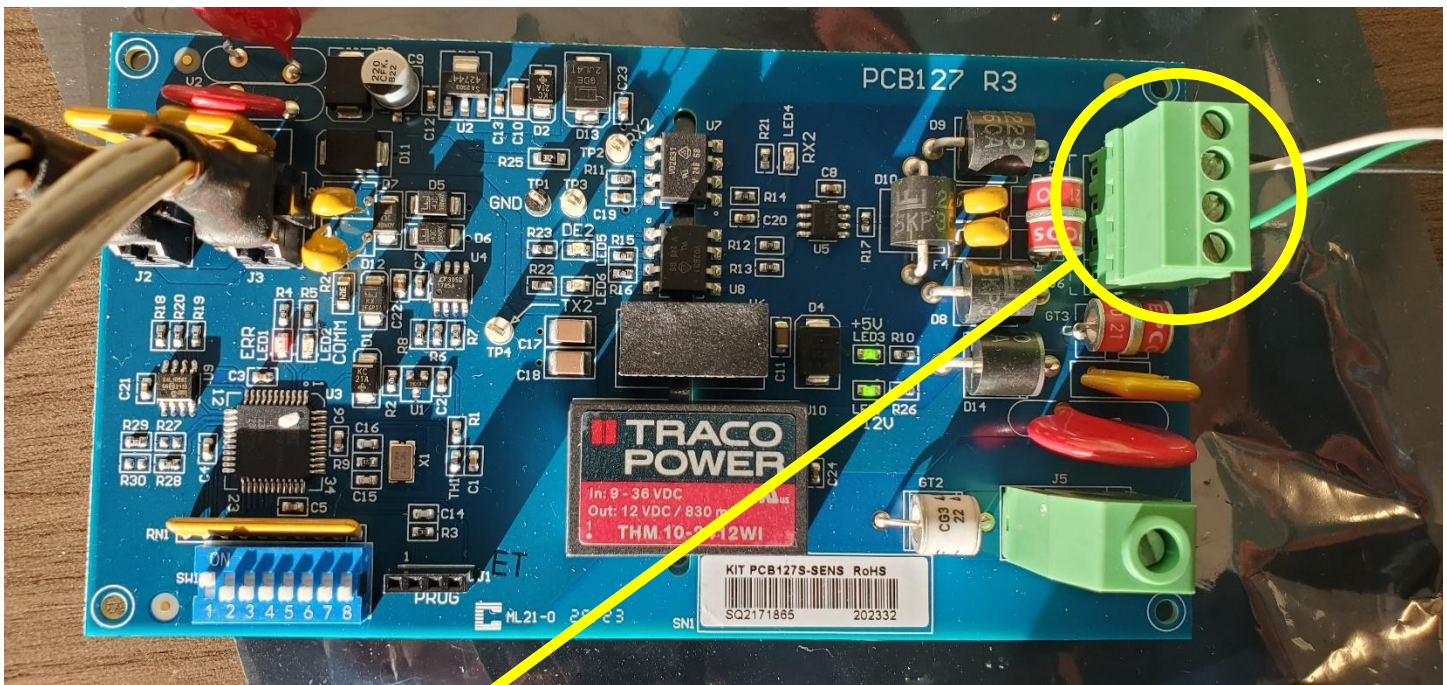
NOTE: There is a maximum of one HL-10S per BinTrac Indicator, and a maximum of five HL-10S units per Modbus card. When connecting multiple BinTrac Indicators/HL-10S units, each BinTrac Indicator needs to be set to a unique station ID. Please see the **BT200/BT260 Operators Manual** for more information on setting device IDs or contact HerdStar at 507-344-8005 and press 2 for Technical Support.

### HL-10S Dip Switch Settings

Dip Switch 1	Dip Switch 2	Dip Switch 3	Dip Switch 4
OFF	OFF	OFF	OFF

Dip Switch 1	Dip Switch 2	Dip Switch 3	Dip Switch 4	Dip Switch 5	Dip Switch 6	Dip Switch 7	Dip Switch 8	Dip Switch 9	Dip Switch 10
OFF	ON	ON	OFF	OFF	OFF	OFF	OFF	OFF	OFF

### Maximus Wiring



HL-10S Serial Port	Maximus
A/T	B
B/R	A
COMMON	-

## ***Legal***

Portions of this device's firmware are ported from freemodbus available at <http://freemodbus.org>. The following disclaimer is required by the author:

Copyright (c) 2006 Christian Walter [wolti@sil.at](mailto:wolti@sil.at) All rights reserved.

Redistribution and use in source and binary forms, with or without modification, are permitted provided that the following conditions are met:

1. Redistributions of source code must retain the above copyright notice, this list of conditions and the following disclaimer.
2. Redistributions in binary form must reproduce the above copyright notice, this list of conditions and the following disclaimer in the documentation and/or other materials provided with the distribution.
3. The name of the author may not be used to endorse or promote products derived from this software without specific prior written permission.

THIS SOFTWARE IS PROVIDED BY THE AUTHOR ``AS IS" AND ANY EXPRESS OR IMPLIED WARRANTIES, INCLUDING, BUT NOT LIMITED TO, THE IMPLIED WARRANTIES OF MERCHANTABILITY AND FITNESS FOR A PARTICULAR PURPOSE ARE DISCLAIMED. IN NO EVENT SHALL THE AUTHOR BE LIABLE FOR ANY DIRECT, INDIRECT, INCIDENTAL, SPECIAL, EXEMPLARY, OR CONSEQUENTIAL DAMAGES (INCLUDING, BUT NOT LIMITED TO, PROCUREMENT OF SUBSTITUTE GOODS OR SERVICES; LOSS OF USE, DATA, OR PROFITS; OR BUSINESS INTERRUPTION) HOWEVER CAUSED AND ON ANY THEORY OF LIABILITY, WHETHER IN CONTRACT, STRICT LIABILITY, OR TORT (INCLUDING NEGLIGENCE OR OTHERWISE) ARISING IN ANY WAY OUT OF THE USE OF THIS SOFTWARE, EVEN IF ADVISED OF THE POSSIBILITY OF SUCH DAMAGE.



## HerdStar BinTrac® Warranty

HerdStar, LLC (“**HerdStar**”) warrants to original purchaser (“**Buyer**”) that goods manufactured solely by HerdStar, LLC (“**Products**”) will be free from defects in material or workmanship under normal and intended use and service for a period of one year from delivery date of the Products. Used and/or refurbished parts sold shall carry a 90-day warranty on material and workmanship. All warranty claims must be submitted within ten (10) days of discovery of defects within the warranty period, or shall be deemed waived. Furthermore, HerdStar, LLC warrants the load cell (“Load cell” is defined as the s-shaped component and any cabling and connectors) against lightning damage for 12 months or the term of any extended warranty.

In the event of a defect in any Products constituting a breach of the warranty provided herein, HerdStar, LLC will at its option either (i) repair or replace such Product free of charge, or (ii) in lieu of repair or replacement, refund to Buyer the original purchase price less the reasonable value of Buyer’s use of the Products. HerdStar, LLC shall furnish to Buyer instructions for the disposition of the defective goods. HerdStar, LLC shall have the option of requiring the return of the defective goods, transportation prepaid, and proof that the goods were not used, installed or altered or subject to misuse or abuse to establish the claim. No goods shall be returned to HerdStar, LLC without its prior consent. The acceptance of any goods returned to HerdStar, LLC shall not be deemed an admission that the goods are defective or in breach of any warranty, and if HerdStar, LLC determines that the goods are not defective they may be returned to Buyer at Buyer’s expense. This warranty sets forth Buyer’s sole and exclusive remedies for any defect in the goods. The rights and obligation under this warranty may not be assigned or delegated to a third party by Buyer without the prior written permission of HerdStar, LLC. Neither Buyer nor any other person may modify or expand the warranty provided herein, waive any of the limitations, or make any different or additional warranties with respect to the Products. Any statements to the contrary are hereby rendered null and void unless expressly agreed to in writing by an authorized officer of HerdStar, LLC.

EXCEPT AS STATED IN ABOVE, HERDSTAR, LLC DOES NOT MAKE ANY WARRANTY AS TO THE GOODS OR SERVICES AND, IN PARTICULAR, DOES NOT MAKE ANY WARRANTY OF MERCHANTABILITY OR FITNESS FOR ANY PARTICULAR PURPOSE, AND BUYER IS SOLELY RESPONSIBLE FOR DETERMINING THE PROPER APPLICATION AND USE OF THE GOODS.

HerdStar, LLC makes no representation or warranty that individual animals, or any given population of animals, will utilize any of HerdStar, LLC’s goods in the manner for which the goods were intended or designated. Any component parts that are not manufactured by HerdStar, LLC, such as electrical motors and controls, are excluded from any warrant by HerdStar, LLC, although such parts may be covered by separate warranties of the respective manufacturers. This warranty set forth above does not apply if all components of a system are not supplied by HerdStar, LLC or if the goods are not purchased from and installed by an authorized distributor or company warehouse, or installed and operated in accordance with HerdStar LLC’s specifications and instructions.

HERDSTAR, LLC SHALL NOT HAVE ANY TORT LIABILITY TO BUYER OR ANY OTHER PERSON WITH RESPECT TO ANY OF THE GOODS OR SERVICES AND SHALL NOT BE LIABLE FOR CONSEQUENTIAL, INCIDENTAL, SPECIAL, EXEMPLARY, INDIRECT OR PUNITIVE DAMAGES ARISING FROM ANY PRODUCT DEFECT, DELAY, NONDELIVERY, RECALL OR OTHER BREACH. BUYER SHALL NOT HAVE ANY RIGHT OF REJECTION OR OF REVOCATION OF ACCEPTANCE OF THE GOODS.